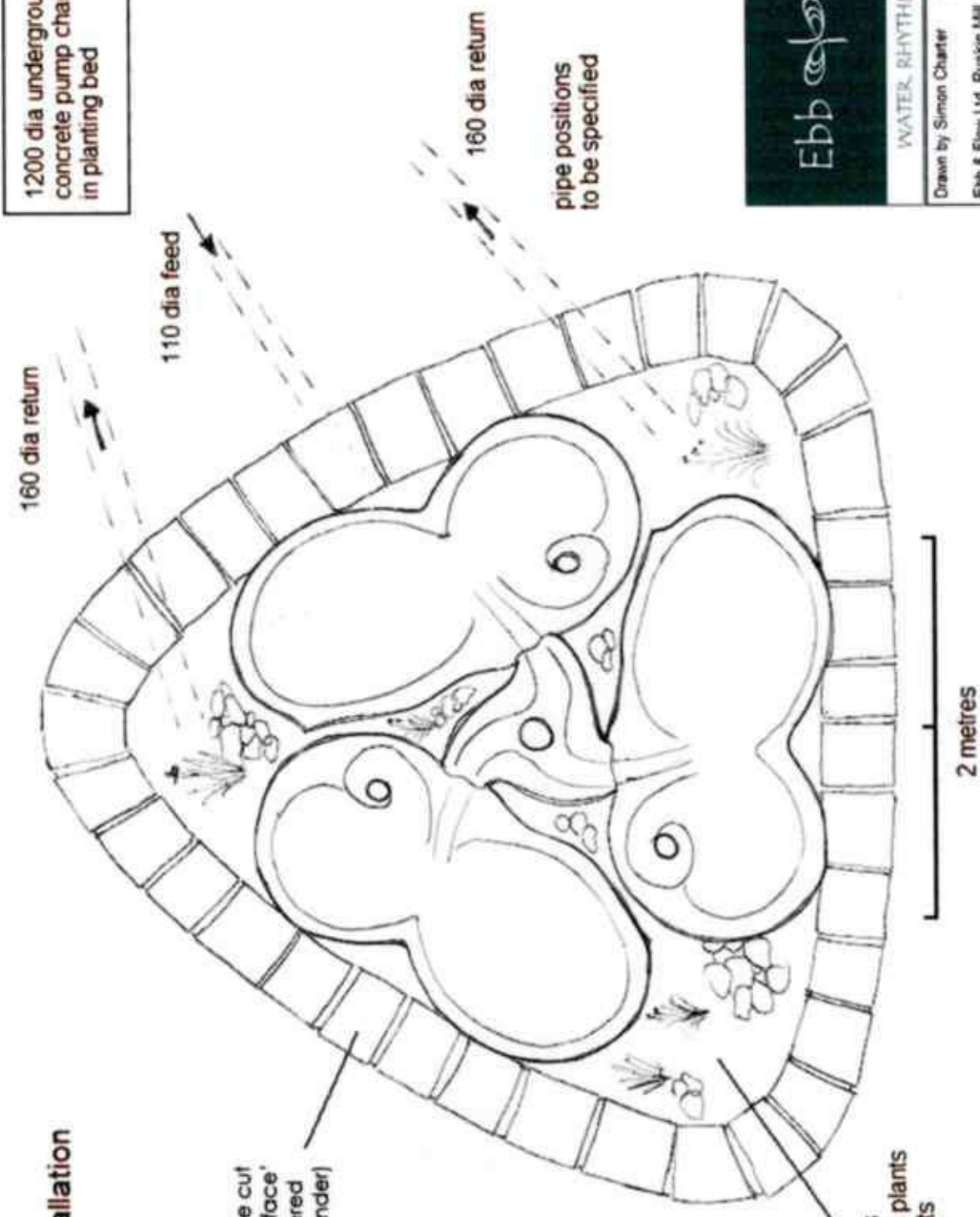


Viktor Flowform Raised Pool Installation

Wall capped with purpose cut local brown/red 'natural face' riven stones laid on rendered block work (Terracotta render)

Bed of paddlestones red/grey and aquatic plants in submersed baskets



1200 dia underground concrete pump chamber in planting bed

pipe positions to be specified

Ebb & Flow	
WATER, RHYTHM & LIFE	
Drawn by Simon Charter	01/10/10
Ebb & Flow Ltd, Ruskin Mill, Old Bristol Road, Hallswoth, Gloucestershire GL6 0LA	
T. 01453 836060	E. info@ebbandflowltd.co.uk